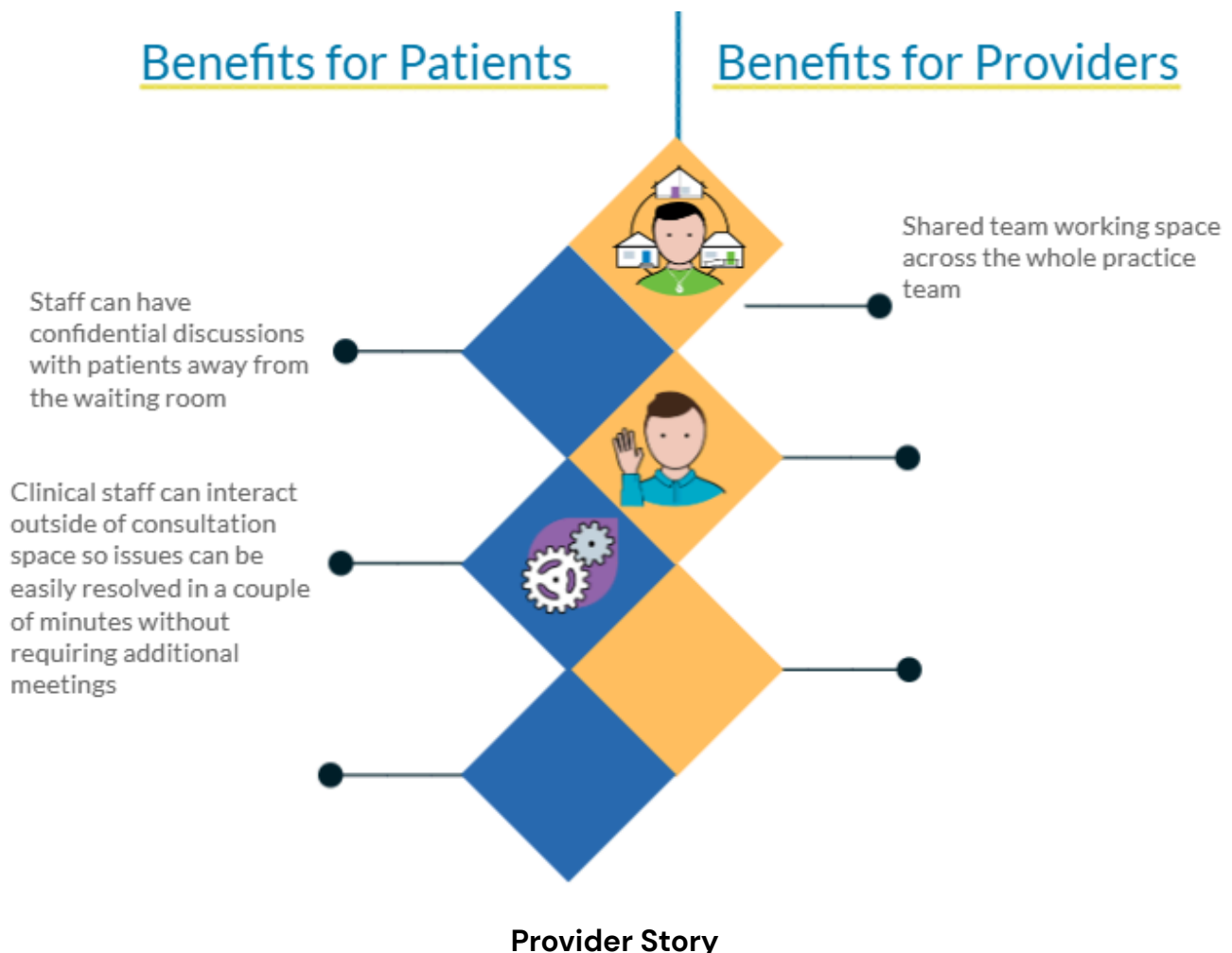


Overview

What is Facility infrastructure?

A practices facility infrastructure has been designed to allow for planned HCH processes, including “off-stage” work and team space and maximise utilisation of clinical space. This also encourages team based care, collegiality and engaged leadership.

Why?



“Going back to the off-stage area gives you the opportunity to bounce ideas off people in those few minutes between appointments or in your paperwork slots,” says Health Te Aroha GP.

“People don’t really appreciate the benefits of something like that until they experience it. It creates real teamwork through the whole day.”