



Collaborative Aotearoa NEWSLETTER



December 2022

Festive Greetings



Amarjit Maxwell - Tumu Whakarae

It's been a busy and demanding year, with lots of change as a result of the 2022 Health Reforms. Covid continues to add pressure on our health system, and with General Practice at the front line of health, they continue to feel the impact of increased demand and complexity. Kia kaha e te whānau.

During this time of change, alignment with Te Pae Tata and Pae Ora (Healthy Futures) is the driving force of our mahi. We support our network with practical change and implementation in all things **Health Care Home, Digital Health and Collective Action with Communities**.

Capturing the voice of whānau and lived experience is at the heart of all our programmes. **"Lead with Stories"** with the support of Jehan Casinader was a recent pilot offering tools for leaders to authentically capture the voice of whānau and their untold stories. Creating space for whānau to build trust, connection and healing, leading to the much-needed change to achieve equitable futures.

Have a restful break over the festive period!

**Missed a webinar - visit our
YouTube page**

[Collaborative Aotearoa -
YouTube](#)

PROSCI TRAINING - 22 FEBRUARY 2023

We are excited to be offering virtual online Prosci Change Management training - "Leading your team through Change" program on the 22 February 2023.

This virtual instructor-led program is designed to activate the people manager role within your change management practice.

Register your interest and find out further details, including cost.

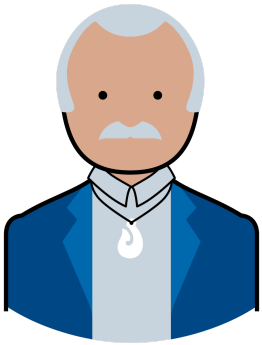


REGISTER

Symposium September 2022

The Collaborative Aotearoa Symposium 2022 was a great success. Our network delivered inspiring and engaging presentations, workshops and whakawhanaungatanga in the context of the health reforms. The day had a core focus on filling our kete with knowledge to support primary and community care into the future.

189 attendees joined us for the Symposium from 68 different organisations across Aotearoa, including PHOs, General Practices, National Advocacy Bodies, Central Government Agencies, and District Councils. Feedback was really positive, with some suggesting a preference for more to time to create space for greater content and networking. We have taken this on board and in 2023 and we're planning for a two-day conference event. More information to follow. Thank you to all who participated to make this day successful!



"Overall, the Symposium was awesome, and the workshops were terrific as far as group collaboration goes. It was also an awesome opportunity for us to get comfortable with being uncomfortable. I look forward to attending more of these in the future."



Sharing our mahi nationally and internationally



Highlights from recent conferences included presentations covering Collective Action with Communities as well as Lean and Health Care Home at: Practice Managers and Administrators Association of New Zealand, Social Change Collective, Collaborative Aotearoa Symposium and Local Government Taituarā.



Jo Henson (Change and Lean Lead) attended the 2022 Lean Healthcare Academic Conference (Stanford University) in San Francisco, co-presenting with Tū Ora Compass Health. The presentation focused on the application of Lean tools with a strong focus on diversity, inclusion and equity.

Symposium presentations & videos

Missed out on attending the Symposium - you can catch all the presentations here: [Collaborative Aotearoa Symposium 2022 - In Person - YouTube](#).

SAVE THE DATE

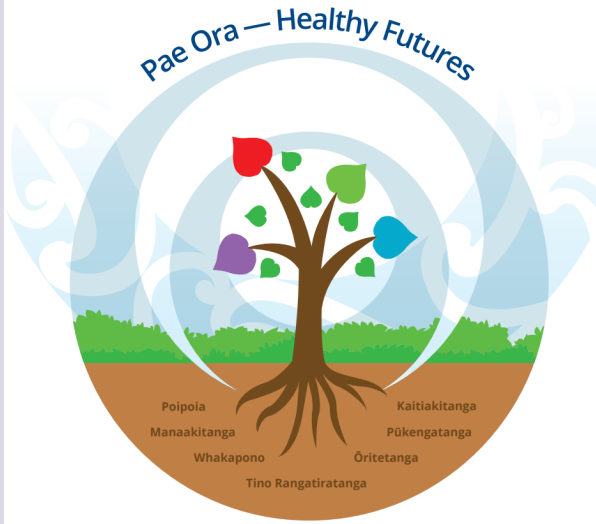
We are already busy working on our symposium for August/September 2023.

Watch this space for more details in the new year

Whakawhanaungatanga is at the heart of our mahi

HEALTH CARE HOME

Health Care Home (HCH) continues to garner significant interest in the health sector, as General Practices review the learnings post pandemic. The HCH model of care is a way to achieve efficiency, effectiveness and equity, with whānau at the centre. The Building Blocks of **Health Care Home** offer the core attributes of modern general practice, with an introduction to the core elements. Collaborative Aotearoa work directly with PHOs and practices to support them in the implementation of the model. Working with the PHO Leads who collectively have so much experience, skill, passion and energy for this work, is always a highlight.



COLLECTIVE ACTION WITH COMMUNITIES

Collective Action with Communities is about **shifting mindsets** – for locality leaders to reframe, reimagine and refocus their efforts. It’s about considering the **six conditions for success** such as authentic and genuine Leadership, Culture, Iwi/Māori Partnership to ensure shared power and decision making. It’s about elevating the voice of others to achieve the kaupapa of a fair chance for all. A central tenet is that collaboration moves at the speed of trust so whakawhanaungatanga is at the heart of everything and supports enduring relationships. We encourage you to complete the **Ngā kete wānanga** online modules for Collective Action (CPD points apply and allow 1hr 15mins to complete all modules) [Online learning - Collective Action with Communities \(localities.org.nz\)](http://localities.org.nz).

This approach provides a **whānau centred** roadmap for **change and implementation at scale and pace** - helping to figure out the jigsaw puzzle that often represents our communities. Capturing what matters to whānau, the dreams and aspirations of communities is all part of bringing to life the **Whānau Ora** approach.



WORKSHOPS

To support further knowledge and skill development, individually tailored workshops are available. These can help develop a common language, dive deeper into Collective Action and help to plan future innovations.

We can also facilitate workshops focused on **Effective Community Engagement/Community Organising** and **Lead with Stories**. If you are interested in exploring how to grow the capacity and capability in your teams and your community in this area, please get in touch with jazz.grewal@collab.org.nz.

DIGITAL HEALTH

The online telehealth modules continue to be a useful tool to improve access to health for whānau, offering alternatives to in person care: All Documents - Digital Health (collabdigitalhealth.org.nz).

We continue to creatively support General Practices to maximise digital technologies.



MERI KIRIHIMETE TO YOU AND YOUR WHĀNAU

- Amarjit*
- Mel*
- Jo*
- Liana*
- Jazz*
- Kirsten*