



City & Hackney

Population Health Hub

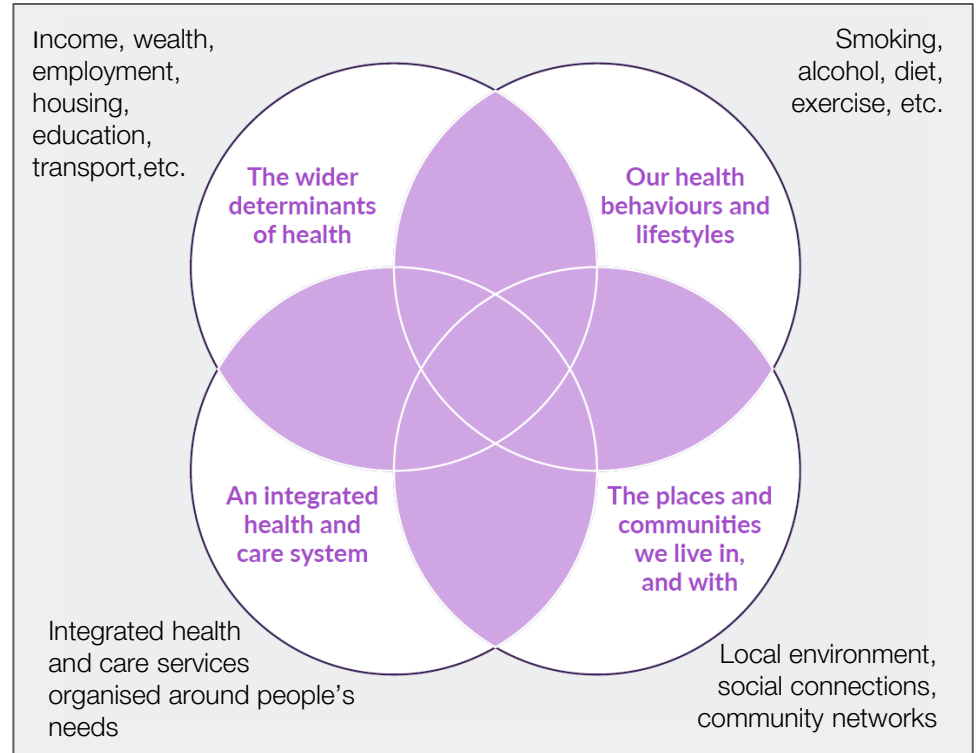
Joia de Sa
Anna Garner

17 May 2023

What do we mean by population health?

Population health is described by the King's Fund as ...

"...an approach that aims to improve physical and mental health outcomes, promote wellbeing and reduce health inequalities across an entire population. Improving population health and reducing health inequalities requires action across all 'four pillars' of a population health system."*



*This figure represents the four pillars as indicated in the four circles. Source: [King's Fund](#)

What is the Population Health Hub?

The Population Health Hub (PHH) is a **shared, system resource** which aims to support the City & Hackney Place based Partnership (PbP) and wider system partners to reduce health inequalities and improve the health of our population.

We support the City and Hackney Place Based Partnership (PbP) vision:

“Working together with our residents to improve health and care, address health inequalities and make City and Hackney thrive”

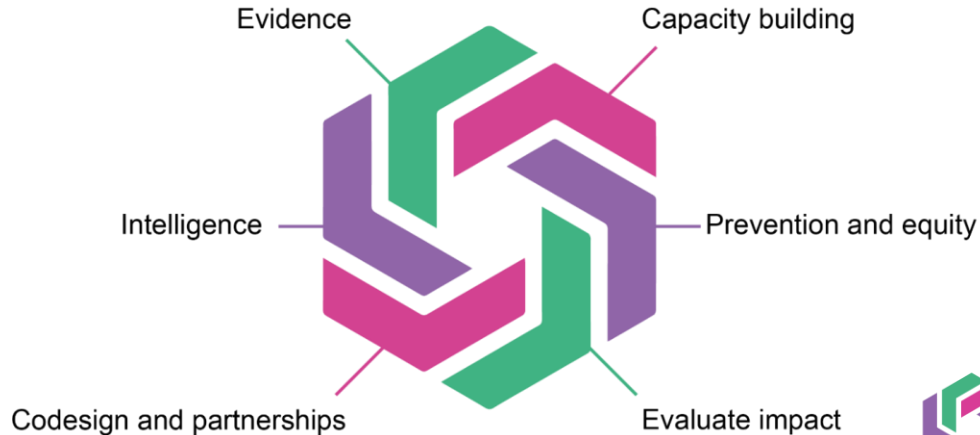


3

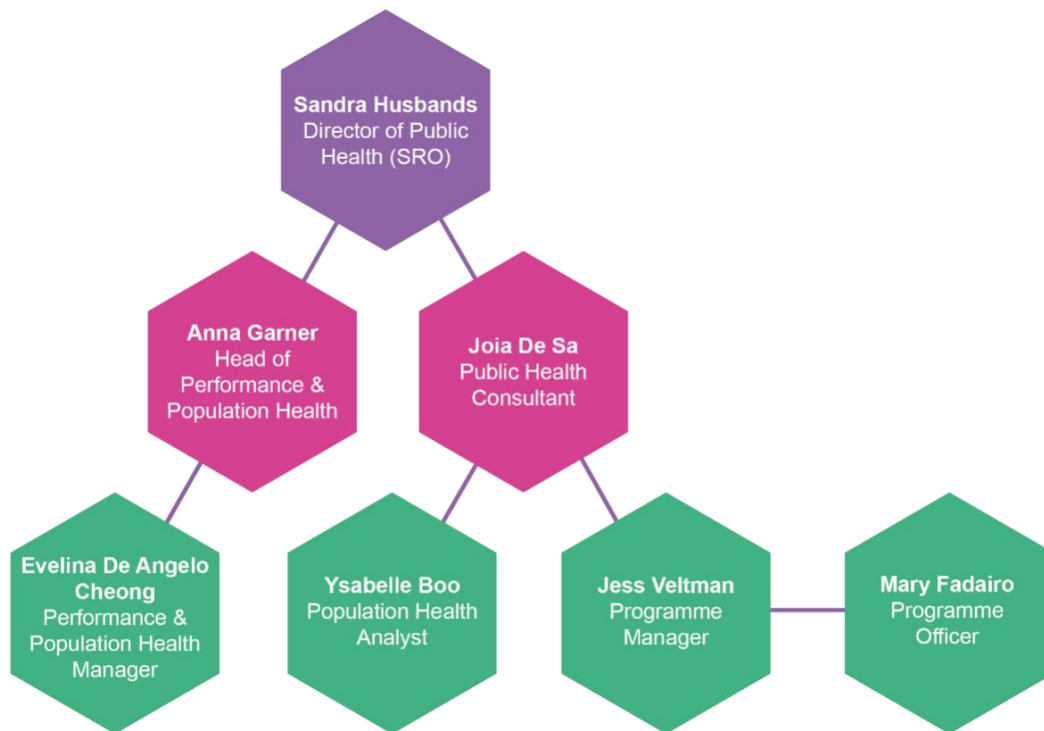
How do we work?

We work to proactively identify what the system needs...

...and also work in partnership on requests for support from stakeholders across the system

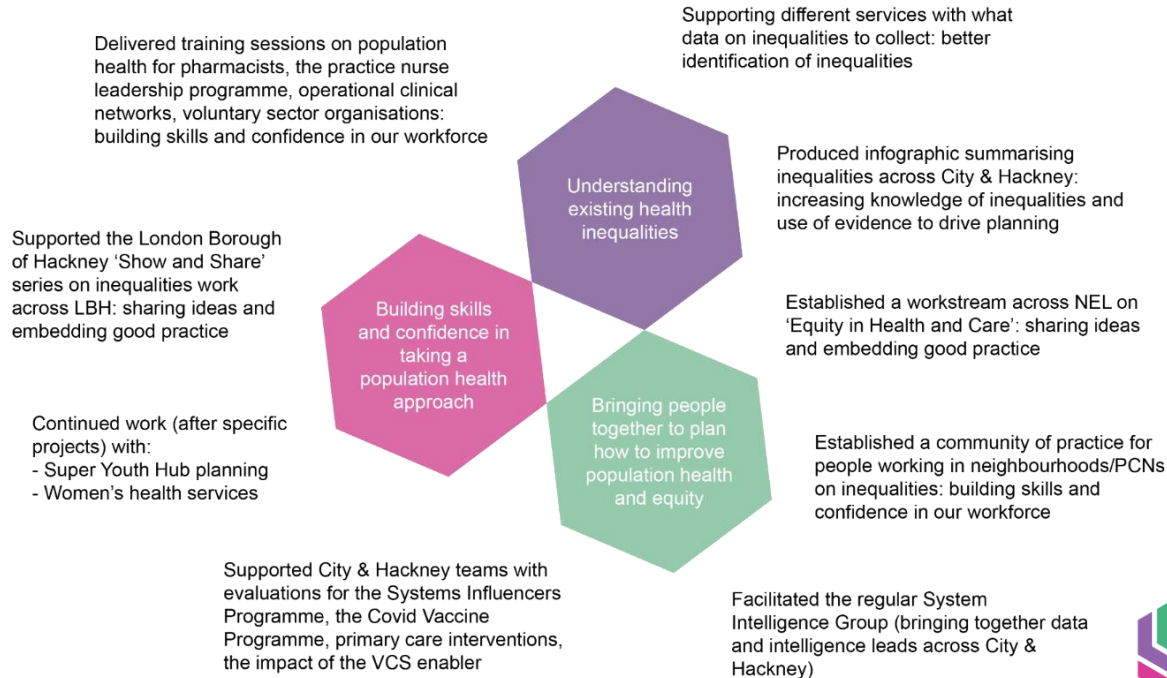


Who's in our team?



Some examples of our projects

We have supported the City and Hackney system and built capacity and capability around improving population health



Making health inequalities everyone's business

OBJECTIVES

- 1 Identify barriers and enablers in implementing the use of existing health equity tools.
- 2 Identify which tools can support and enable system partners across City and Hackney to consider and assess health equity relevant to their work areas, and practical action they can take in response.
- 3 Provide definitions of inequalities to support teams/organisations to articulate their roles, responsibilities and opportunities for them to tackle inequalities.



Draft resource pack piloted with the following health, care and wider service teams:

- City of London Libraries Service
- London Borough of Hackney Senior Managers Network
- ELFT VCSE Network
- NEL Critical Care Operational Network



NEXT STEPS

- 'How to' Guide
- Deliver training and ongoing support
- Expand use across system
- Align and share learning

RESOURCE PACK

Information on drivers of inequality and population health

Prompts to consider how to start to understand inequalities for teams in their work area

Examples of tools which might support identifying and tackling inequalities

Prompts to support individuals, teams, and organisations to identify practical actions to take



What did we do?

City and Hackney Health Inequalities Steering Group identified the need to collate tools and resources to support different teams/organisations to better consider health equity as one of the ten priorities of the steering group. City and Hackney Population Health Hub produced a toolkit, coproduced with pilot sites. The toolkit has also been used to support other teams e.g. the practice nurse leadership programme.

What was the added value of the Hub?

This project benefitted from a system wide perspective and thus the Hub was able to support colleagues across organisations to feed into this project, and ensure that the outputs are relevant to different organisations. The Hub also provided additional capacity to take forward the development and piloting of the toolkit.

What was the impact of the project?

Use of and findings from the development of the toolkit will be built into the MATCH project (next slide) to collate a package of support on embedding health equity

Outputs: completed

1. Production of a toolkit (initial draft) to support teams, organisations, networks, systems
2. Support pilot sites with this: City of London libraries services, Hackney HWB, ELFT VCSE network, LBH SMN
3. Support to Homerton population health programme to engage clinical teams with a similar project

MATCH - eMbedding heAlth equiTY in City & Hackney

Thinking about addressing health inequalities can feel overwhelming...



We want to embed a clear process to help...

1 Bring the right people together

2 Collate data & insight to identify need

3 Use different 'lenses' to review the pathway or programme area to generate change ideas

4 Go through a prioritisation process to identify key change ideas

5 Implement, test and learn.