

COLLECTIVE ACTION WITH COMMUNITIES

29 August 2023



COLLABORATIVE
AOTEAROA



Outline of our Workshop

- **Share** our story
- **Reflect on the** journey that led to Pae Ora (Healthy Futures) legislation from an Indigenous lens
- **Explore** how Collective Action with Communities approach supports health equity
- **Present** Collective Action in Action, Equally Well - a collective impact and systems change approach, a multi sector collaboration in Aotearoa, New Zealand.
- **Workshop** with attendees to understand this approach

Te Tiriti o Waitangi and the health and disability system

He Mana tō Te Tiriti o Waitangi

Expressing Te Tiriti in mana terms

Mana Whakahaere Good Government	Mana Motuhake Unique and indigenous	Mana Tangata Fairness and Justice	Mana Māori Cultural identity and integrity
Article I	Article II	Article III	Declaration

Ngā Kupu o Te Tiriti o Waitangi

Preamble / Kupu Whakataki
Peace and good order

The Articles

Article I Ko te Tuatahi Kāwanatanga	Article II Ko te Tuarua Tino Rangatiratanga	Article III Ko te Tuatoru Ōritetanga	Declaration Whakapuakitanga Ritenga Māori
---	---	--	---

The Vision of He Korowai Oranga

WHĀNAU ORA
Healthy families

Pae ora

HEALTHY FUTURES FOR MĀORI

WAI ORA
Healthy environments

MAURI ORA
Healthy individuals

Principles of Te Tiriti o Waitangi

How we apply Te Tiriti in the modern world

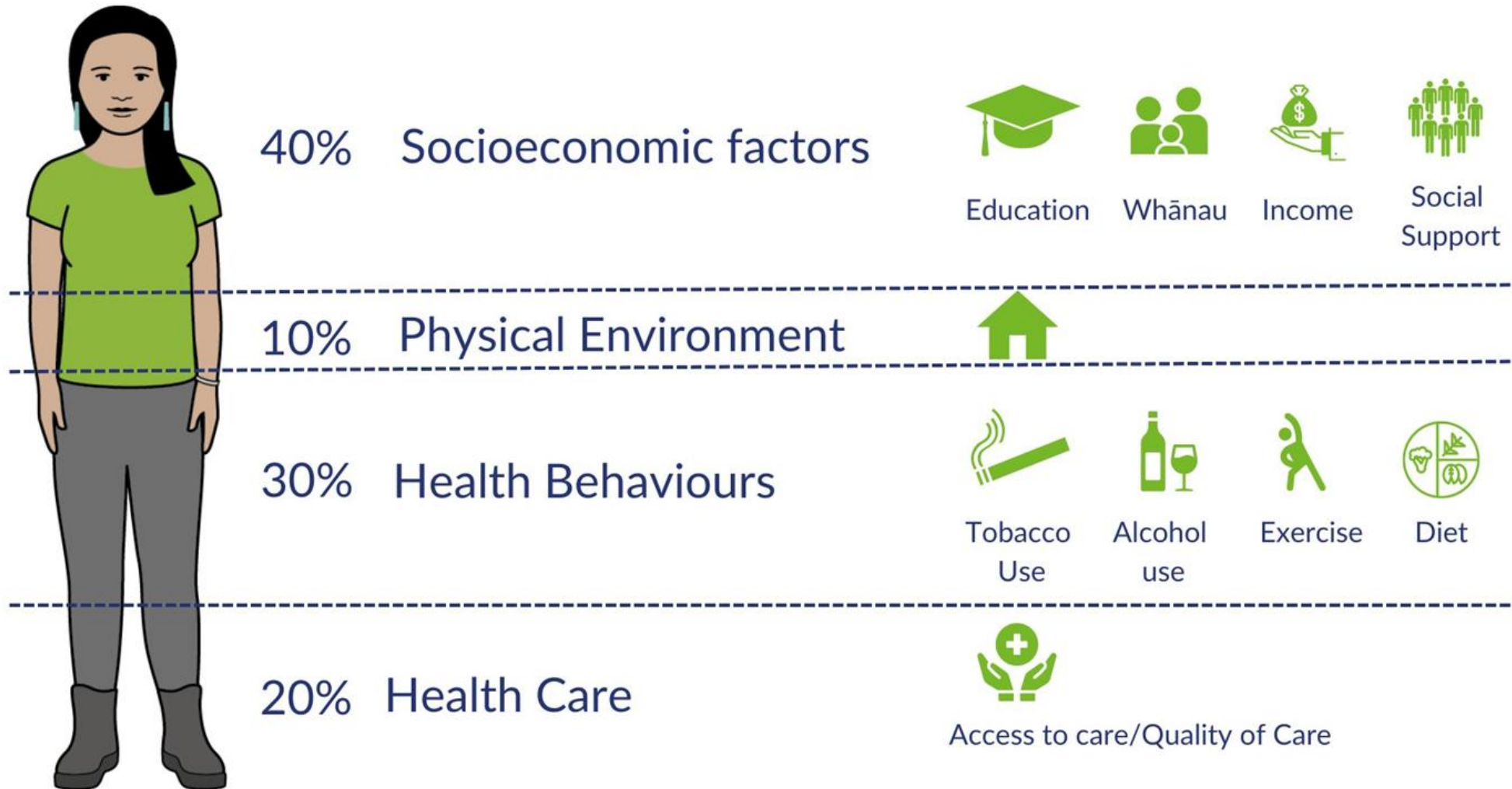
Tino Rangatiratanga	Equity	Active protection
Partnership	Options	

The Health and Disability Sector

How we express our kaitiakitanga

Stewardship	Iwi/Māori health development	Equity focus	Protect Mātauranga Māori
Article I	Article II	Article III	Declaration

WELLBEING and Health



New hopes for wellbeing and health in Aotearoa, New Zealand

- New NZ National Health System
Pae Ora (Healthy Futures) Act 2022
- Organise wellbeing and health services into localities to bring services together into more responsive, place-based networks (localities)



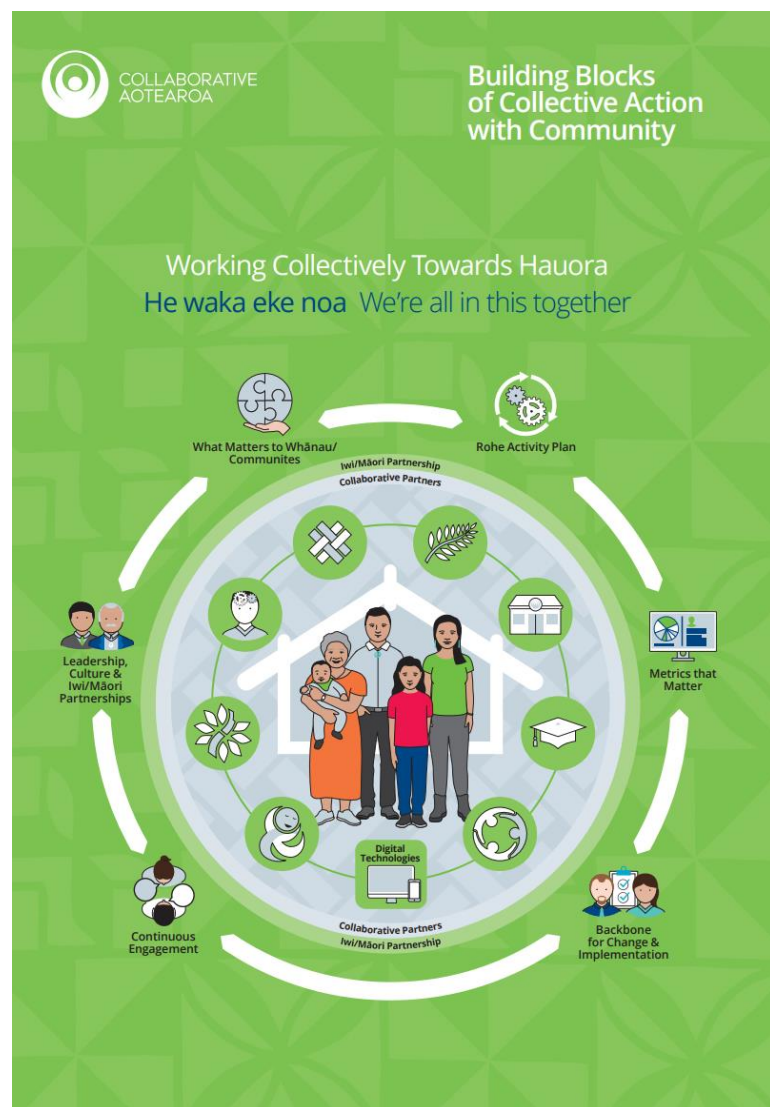
From Collective Impact...

New Definition with equity at the forefront:

Collective impact is a network of community members, organisations, and institutions that advance equity by learning together, aligning, and integrating their actions to achieve population and systems-level change.

Source: Centering Equity in Collective Impact, Stanford Social Innovation Review, 2022

....to Collective Action



Acknowledgement:

- Tamarack Institute & Collective Impact Forum for their open source materials and guidance
- Primary and community sector in Aotearoa for input and peer review

Academia

Open source resources can be found on our website

www.collab.org.nz

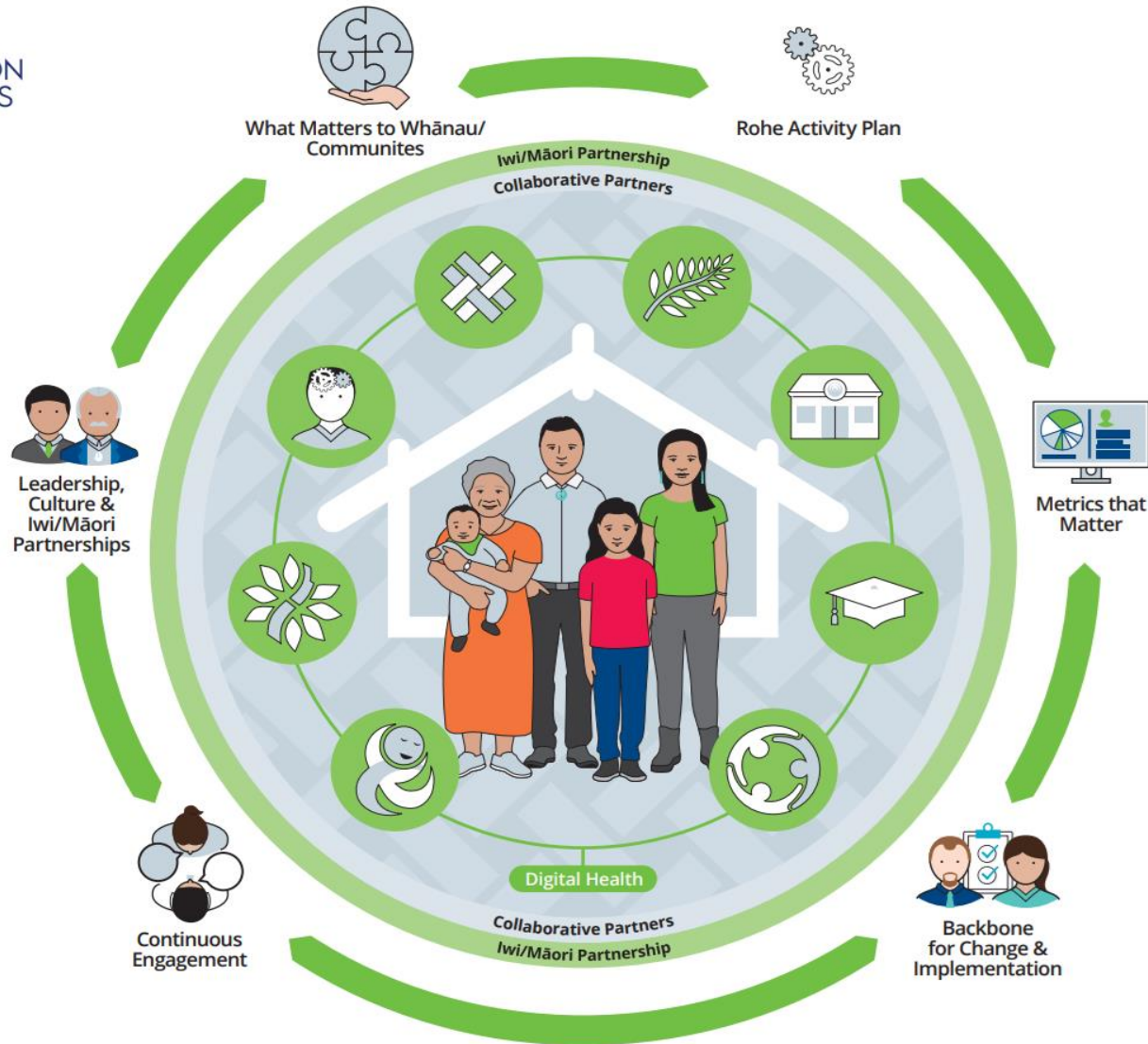
Adapted for Place – Aotearoa, New Zealand



COLLECTIVE ACTION
WITH COMMUNITIES

A Collective Impact Approach to Localities

Applying Collective
Impact concepts as part
of Localities, underpinned
by equity, excellence,
sustainability, partnership
and whānau centred.



SCAN ME



COLLABORATIVE
AOTEAROA





Equally Well

together we are making a difference

Emma Wood

National Manager Practice

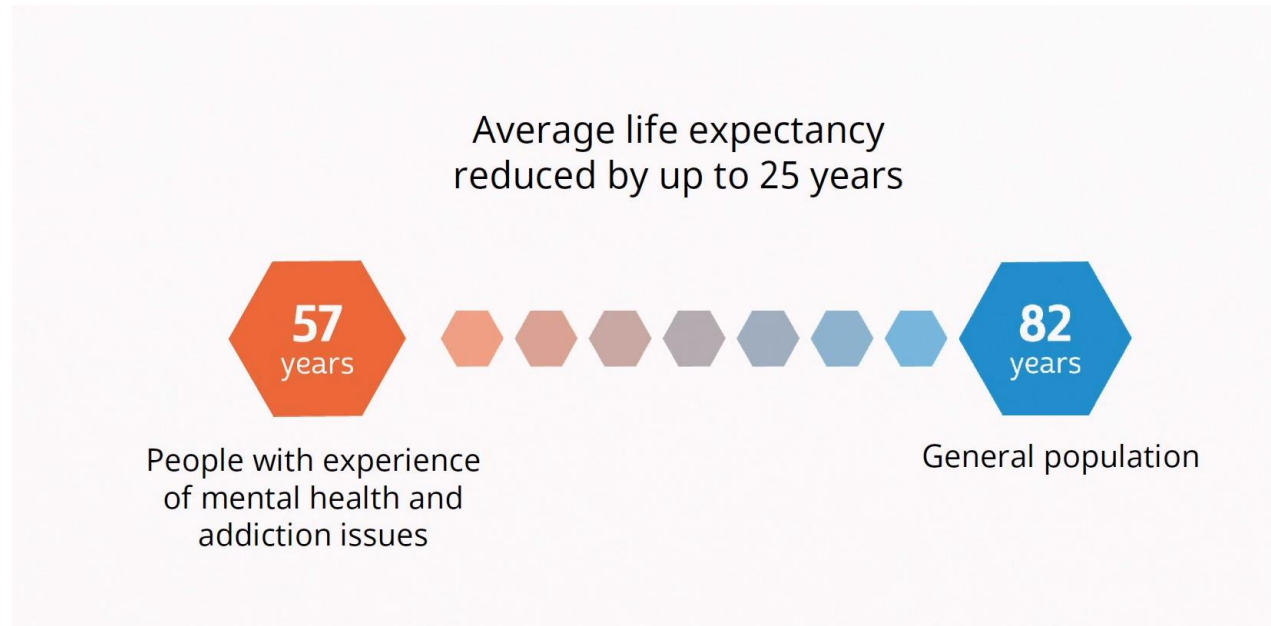
Te Pou



www.equallywell.co.nz



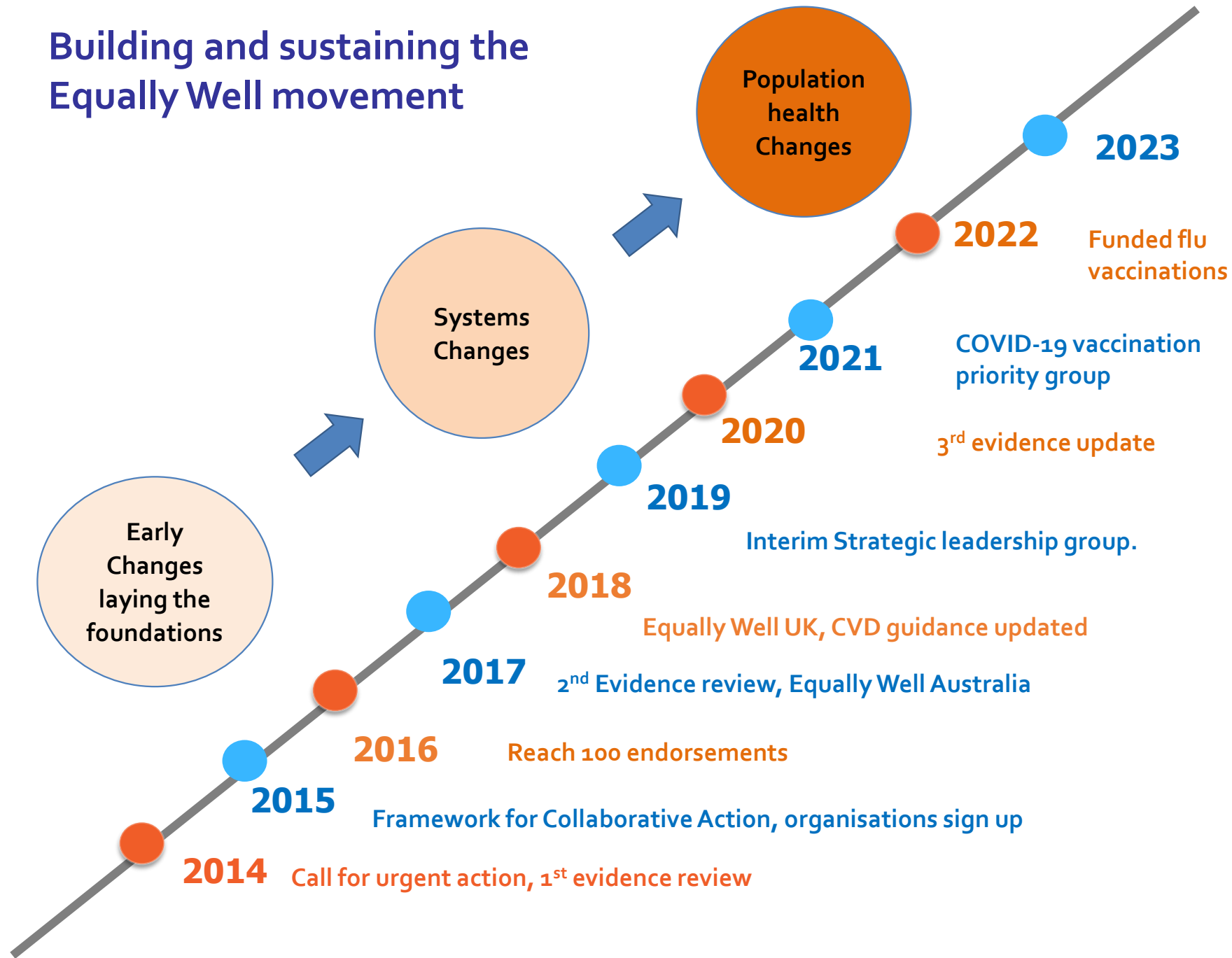
@EquallyW #EquallyWell



Two-thirds of this reduced life expectancy is due to preventable and treatable physical health issues, particularly cancers and heart disease.



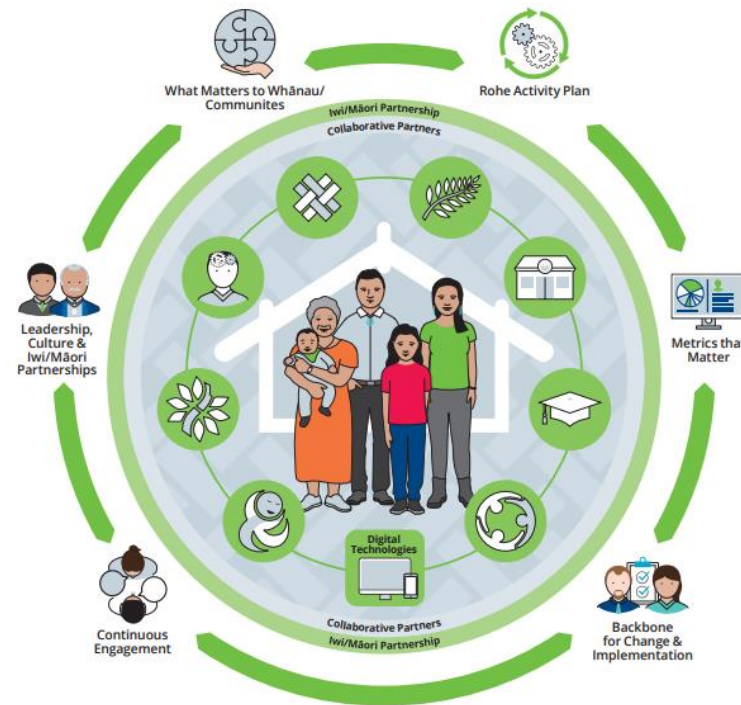
Building and sustaining the Equally Well movement



The six conditions for success

1. *Leadership, culture, Iwi/Māori partnerships*
2. *What matters to whānau communities*
3. *Rohe activity plan*
4. *Metrics that matter*
5. *Backbone for change and implementation*
6. *Continuous engagement*

Collective Action is underpinned by equity, excellence, sustainability, partnership and is whānau-centred.



1. Leadership, culture and Iwi/Māori partnerships

Leadership is not held by a few people its shared across many.

"No change ever happens without people at the centre of the issue demanding change."

(Equally Well Champion)

Ngā Waka o Matariki

This interactive resource combines audio and video with the written word to present the Ngā Waka o Matariki framework to inspire into action. Ngā mihi.

[Click here to start ↓](#)

[Read the History >](#)

2. What matters to whānau, communities

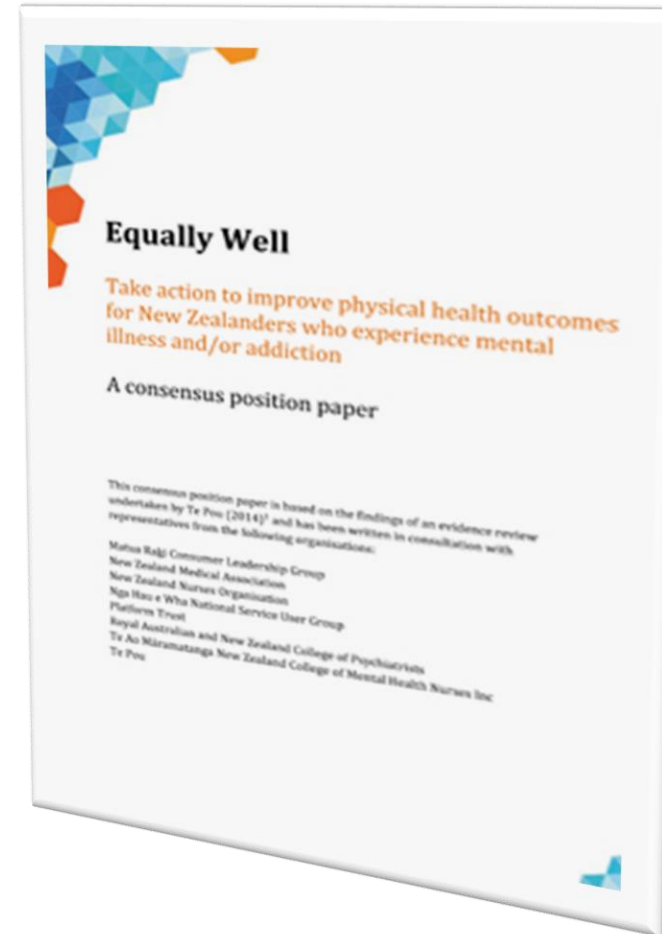
**Look beyond the
mental health and
addiction history.
See the person.....**

- [Jess's Story](#)

3. Rohe activity plan

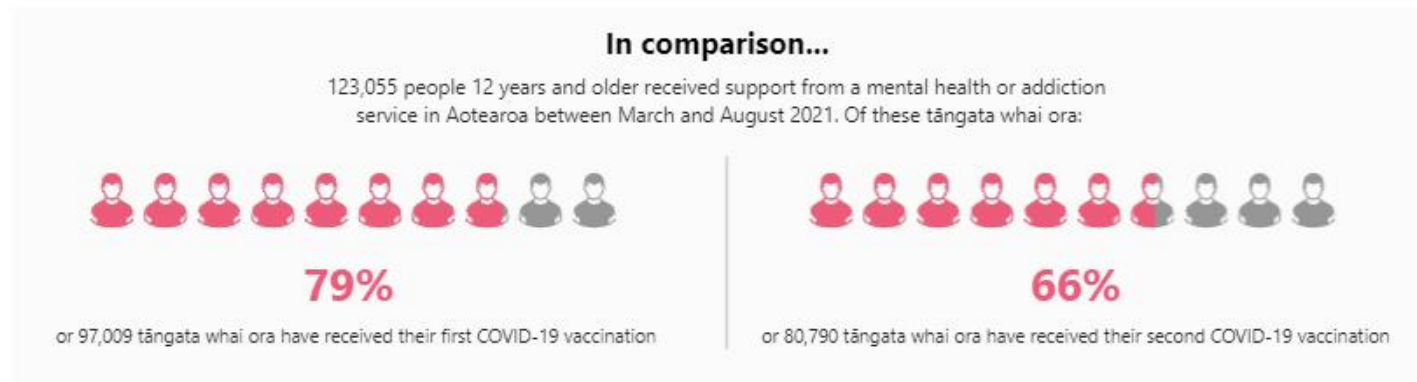
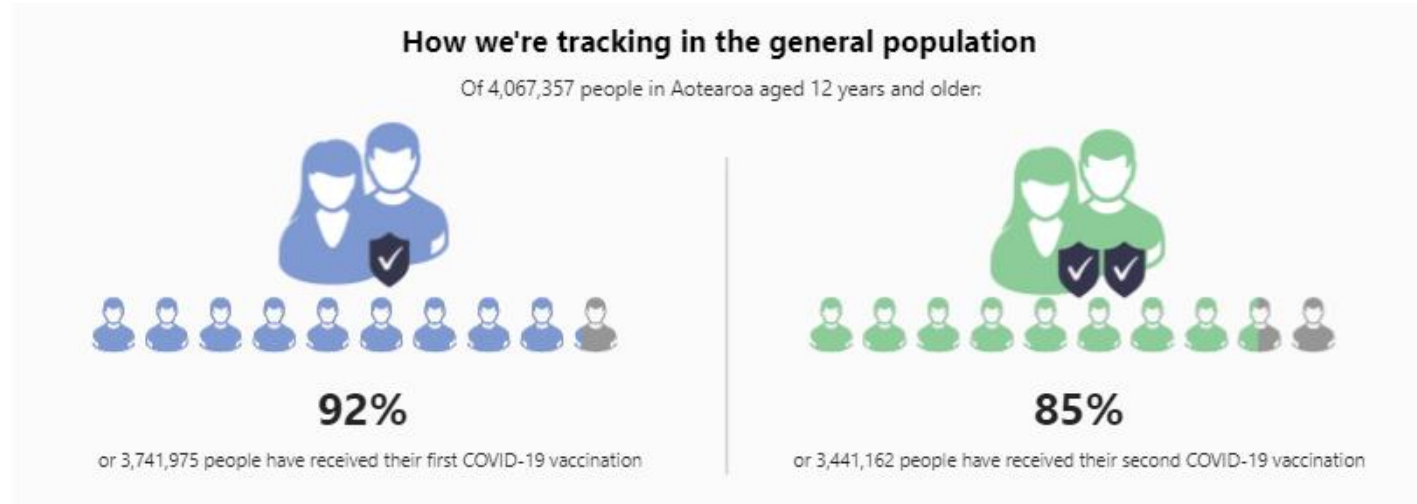
Call to action consensus paper was our starting activity plan...we developed a framework for collaborative action

... it is now time for another.



4. Metrics that matter

Tūtohi – Data
for change
November 2021
Tūtohi.nz



Tāngata whai ora 12 years and older in Aotearoa are 3.09 times more likely to be unvaccinated than the general population.



4. Metrics that matter

Equally Well policy changes

2015	Living Well with Diabetes
2018	Primary care guidance on CVDRA (from age 25)
2019	NZ Cancer Action Plan 2019 - 2029
2021	Priority group for COVID-19 vaccination and a Global call to vaccination equity
2022	Priority group access to COVID-19 antivirals and funded flu vaccination
2023	Free cervical screening programme ...???

5. Backbone for change and implementation

The backbone team is crucial to support national connection, coordination, and motivation

"We were scanning, connecting, looking differently at wider sectors, not just the mental health and addiction sector. Particularly if we didn't have any existing champions in that space."

(Backbone team member)

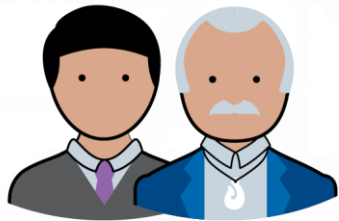
6. Continuous engagement

Whakawhanaungatana, building strong connections through relationships.

- Action groups
- Role of champions
- Role of backbone team to share information
- Making new friends



Bringing Collective Action to Life



**Leadership,
Culture &
Iwi/Māori
Partnerships**



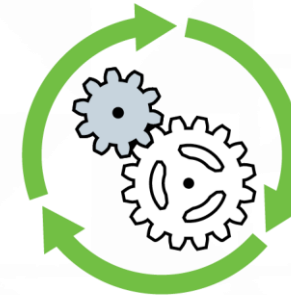
**What Matters
to Whānau/
Communities**



**Backbone
for Change &
Implementation**



**Continuous
Engagement**



**Rohe Activity
Plan**



**Metrics that
Matter**

What does 'COLLECTIVE ACTION' success look like for Māori communities?



Tino Rangatiratanga - self autonomy, self determination and sustainability

- Māori leadership
- Māori communities in Māori hands
- We need partners and like every community we cannot do this alone
- Evolving from having a seat at the table to having our own table

That is what success looks like in my eyes!

Ngā mihi nui - many thanks

Irihāpeti Mahuika *Ngāti Apa ki te rā tō, Kāi Tahu*

Co-chair Collaborative Aotearoa
Director of Hauora Māori and Equity, Pegasus Health

Dr Helen Lockett

Te Pou
Strategic Lead

Amarjit Maxwell

Tumu Whakarae | Chief Executive
Collaborative Aotearoa
amarjit.maxwell@collab.org.nz